



Versa-Tech® Single-Phase Recloser



Versa-Tech Single-Phase Recloser

SMART FAULT INTERRUPTION

Expect reliable fault interruption with the Versa-Tech® single-phase recloser's vacuum interruption-magnetic actuator technology and microcontroller electronic control. Our versatile, wireless-accessible device is easy to use and virtually maintenance-free.

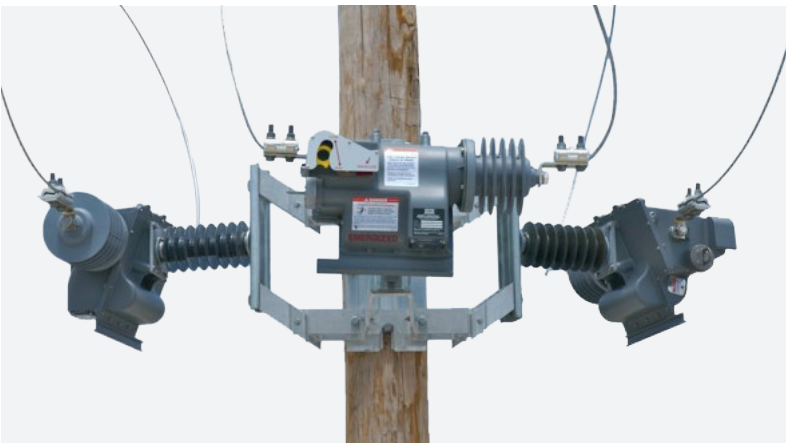
The patented design eliminates the potential for insulation breakdown failure.

+ Benefits

- Reduces inventory
- Improves reliability
- Easy to handle and install
- Environmentally friendly—no oil
- No grounding requirements
- Reduced dielectric issues
- Immune to lightning
- Virtually maintenance-free
- Up to 30,000 mechanical operations

+ Features

- Self-Powered, self-contained control
 - Magnetic-vacuum interruption technology
 - Microcontroller electronic control
- Universal Design
 - Compact, lightweight
 - 29.3kV, 125kV (BIL) rated
 - Programmable TCC curves
 - User-settable minimum trip and sequencing parameters
- Flexible communications
 - DNP3 via *Versa-Tech* Terminal Unit (VTU)
 - SCADA cellular modem (SCM)
 - Short-range communication (Wi-Fi, Digi, Serial)
 - GPS module
- Monitoring
 - Load Monitoring: real-time line current reporting
 - Event and data logging
 - Histories: load usage, fault history
- Advanced security
 - Password-protected programming
 - Advanced cybersecurity

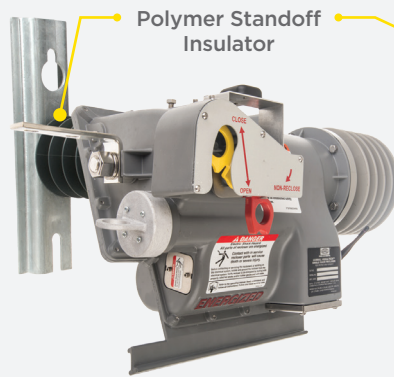


Enjoy more control for enhanced safety and security and experience more savings. The Versa-Tech® family delivers with a proven track record since 2007.

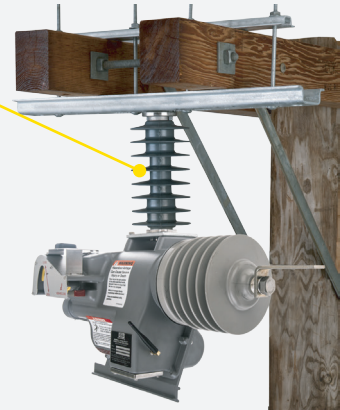
Flexible Mounting Options

- Pole/structure mount
- Crossarm mount
- 3-phase mounting with wing rack

Installation Alternatives



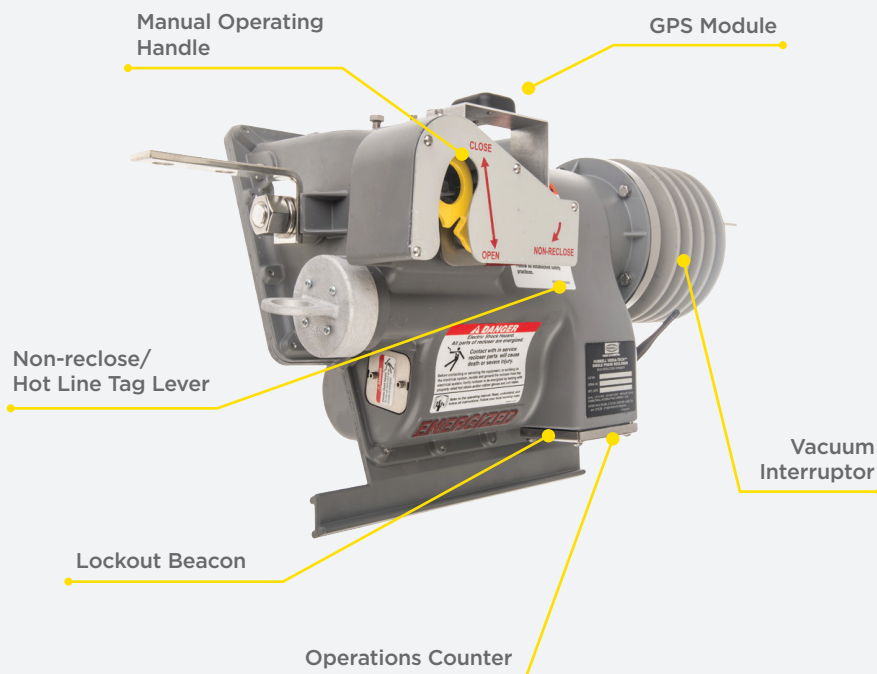
Pole/Structure Face Mounting



Crossarm Mounting

Product Features

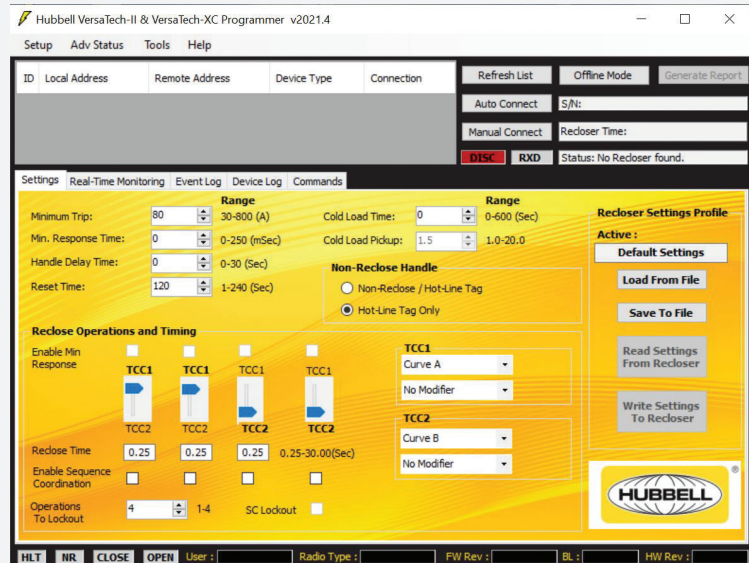
- Manual operating handle
- Lockout beacon
- Operations counter
- Non-reclose/hot line tag lever



Versa-Tech Single-Phase Recloser

User Interface

- Password-protected programming
- TCC curve selection and time current curve editor
- Convenient wireless access via PC, iPad, or iPhone
- User-level permissions
- Remote commands
- One-click report generation



RATING and SPECIFICATIONS

Rating Maximum Voltage	29.3 kV
Rated Continuous Current	Up to 400 A
Fault Make Capacity	Up to 8 kA
Fault Break Capacity	Up to 8 kA
Mechanical Operations	Up to 30,000
0.5 Seconds Withstand Current	Up to 8 kA
Lightning Impulse Withstand	125 kV
60Hz, 1-Minute Withstand Voltage	60 kV
Operating Temperature	-40° to 60° C
Weight kg (lbs)	22 (48)

The Versa-Tech® family offers four different configurations: VTI, VTLT, VTII, VTXC. Refer to our product catalog for details.

Hubbell improves product continuously. Please visit our website to confirm current design specifications.



A proud member of the Hubbell family.

©2022 Hubbell Power Systems. All rights reserved.
Hubbell and the Hubbell logo are registered trademarks or trademarks of Hubbell Incorporated.
All other trademarks are the property of their respective owners.
Email: HPSUtilityAutomation@hubbell.com

LEEDS-SWFU-UTL-BR-EN-00354 | REVISED 12/2022